

MBTA Salem Commuter Rail Station Intermodal Center

SketchUp renderings developed from 30% design drawings.

Primarily massing models with some detail.

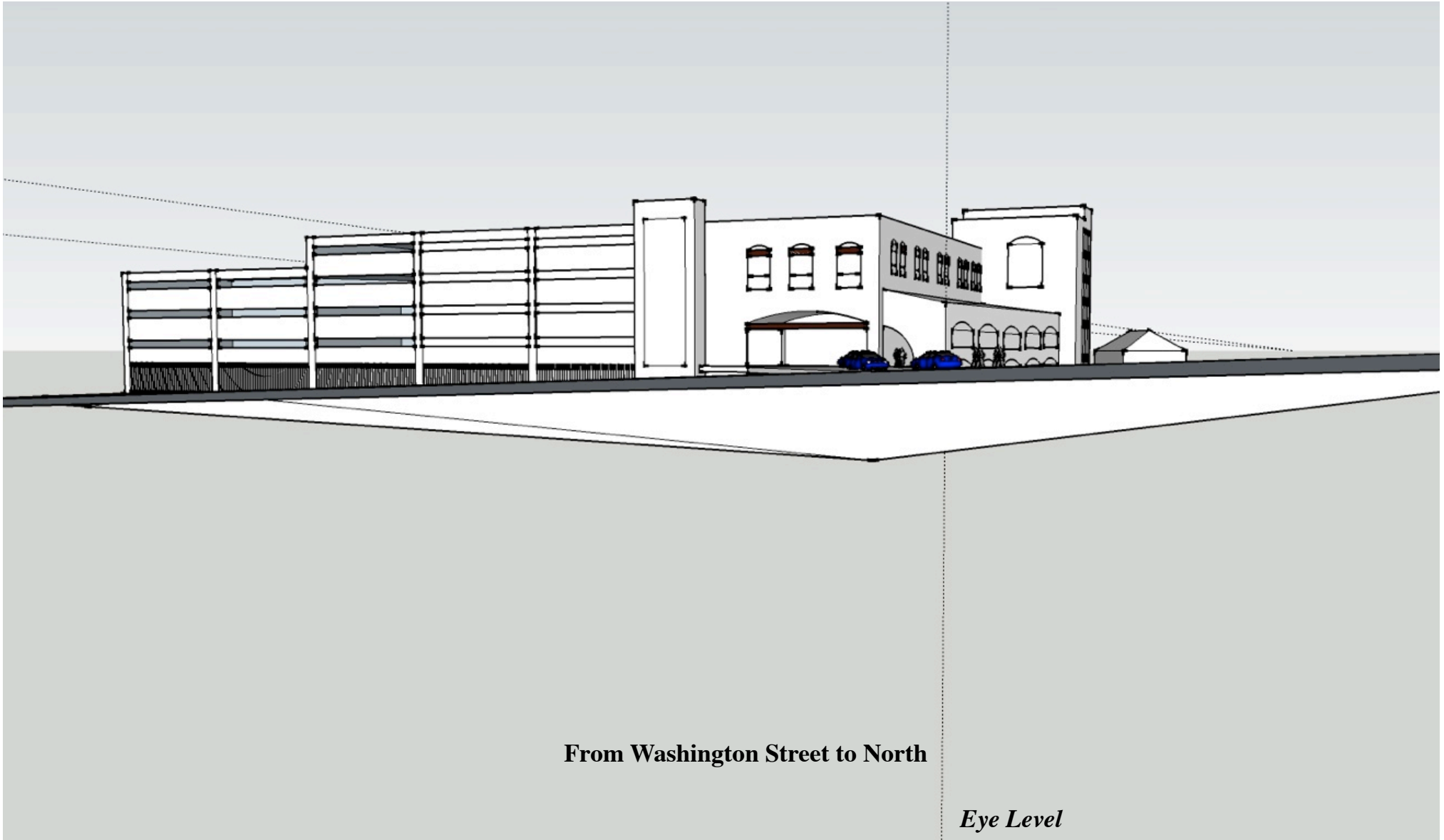
Intricate details not shown.

Railings at Washington Street ramp not shown.

Dimensions are fairly accurate.

Lighting at roof level not shown.

2/21/2010 Rev



From Washington Street to North

Eye Level



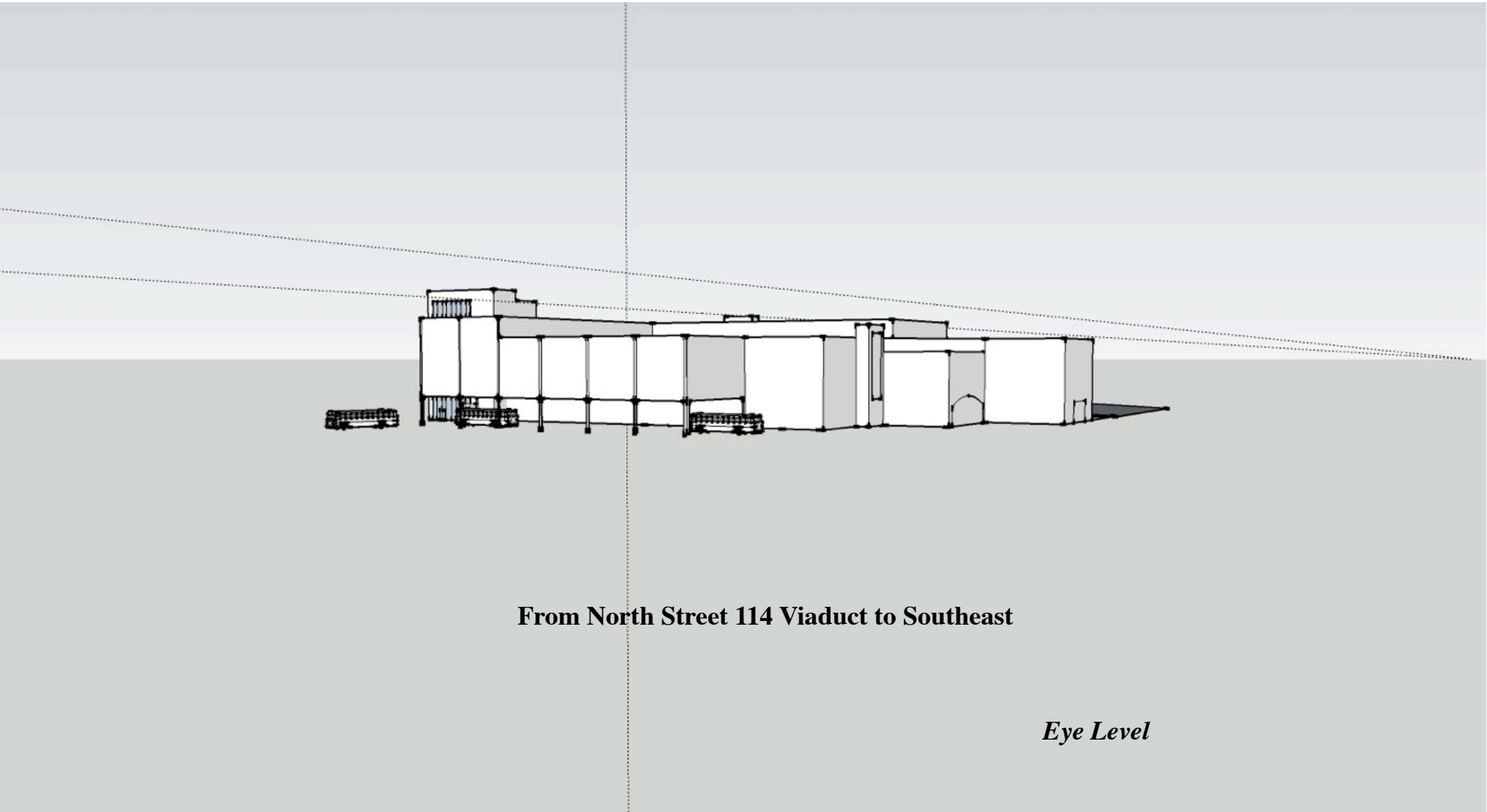
From Washington Street to North, Across Bridge Street

Eye Level



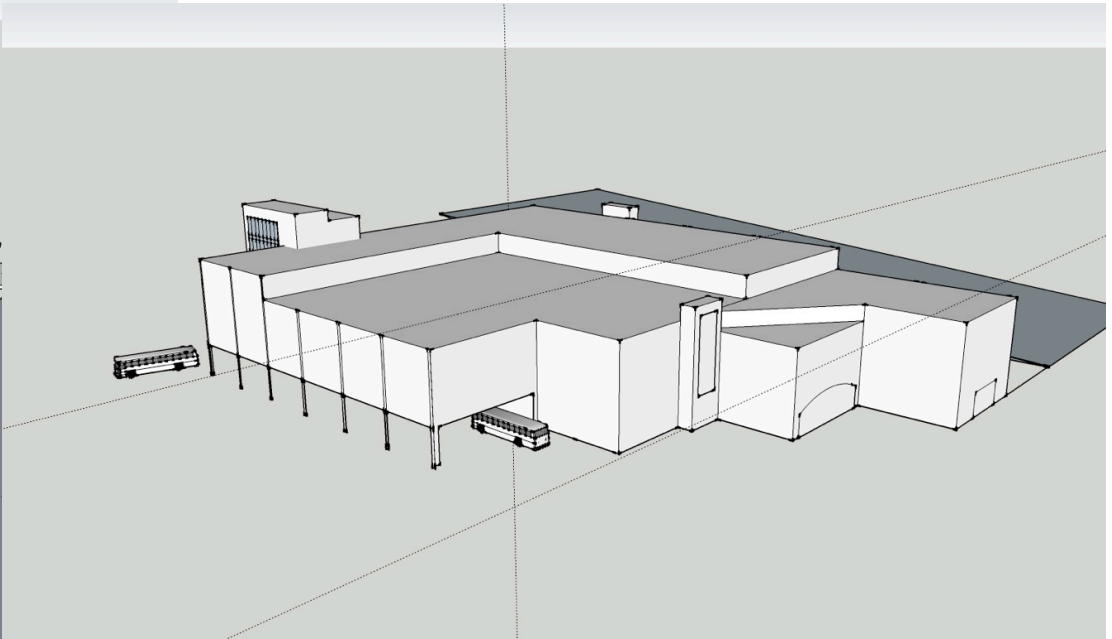
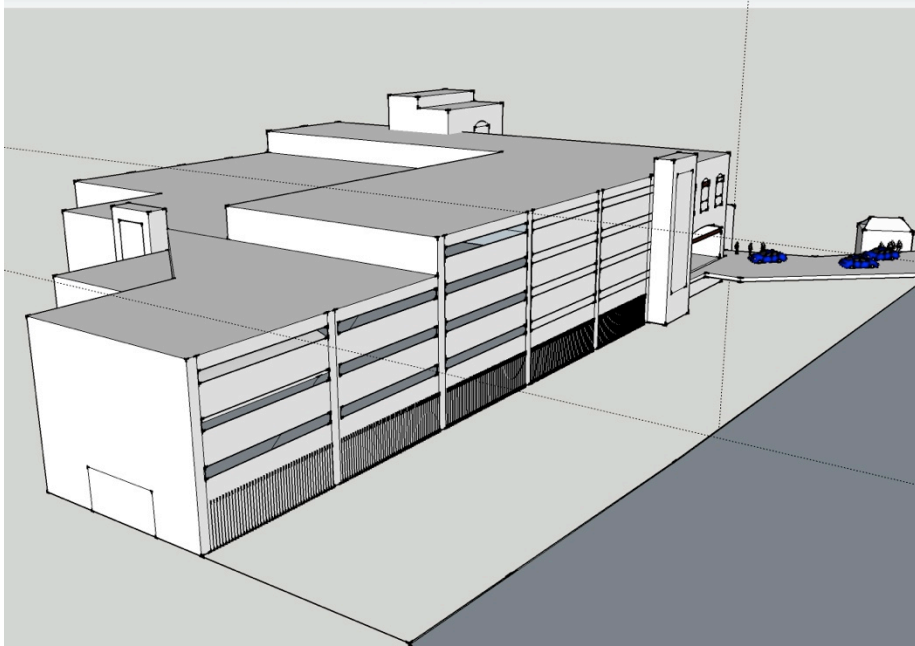
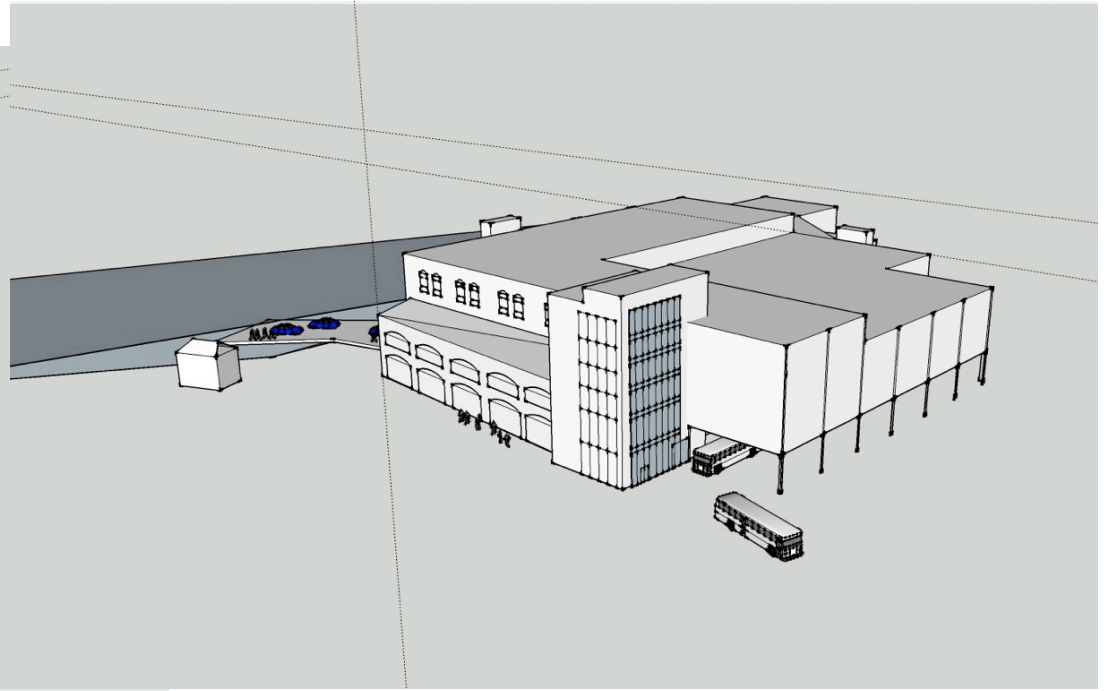
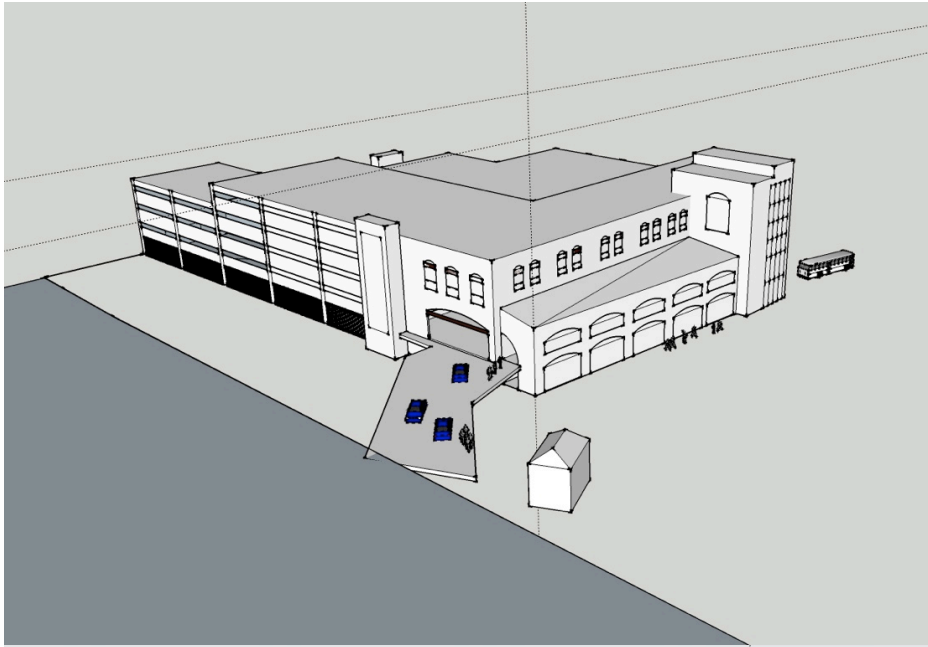
At Ramp at Bridge Street

Eye Level

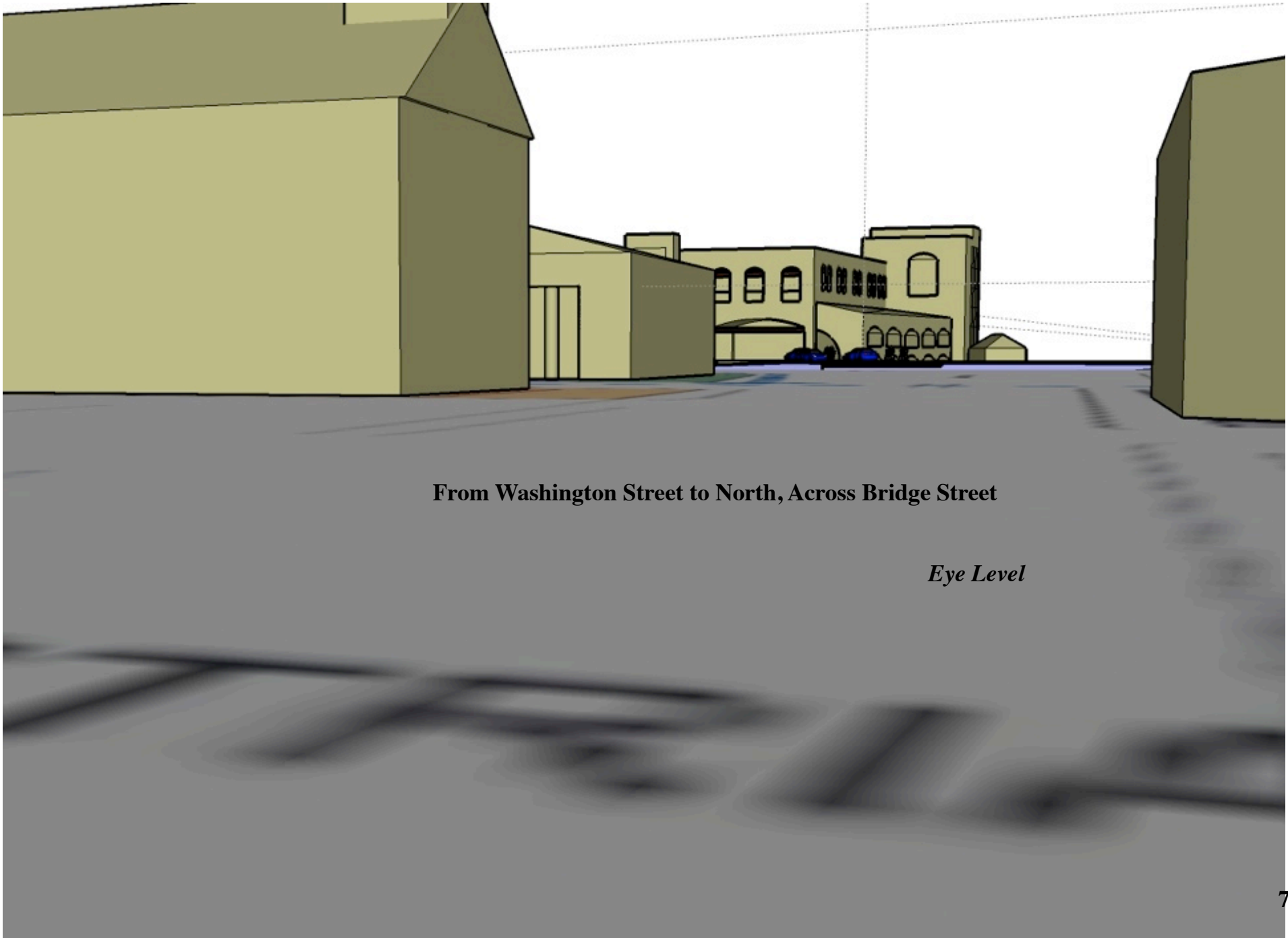


From North Street 114 Viaduct to Southeast

Eye Level



Bird's Eye Views



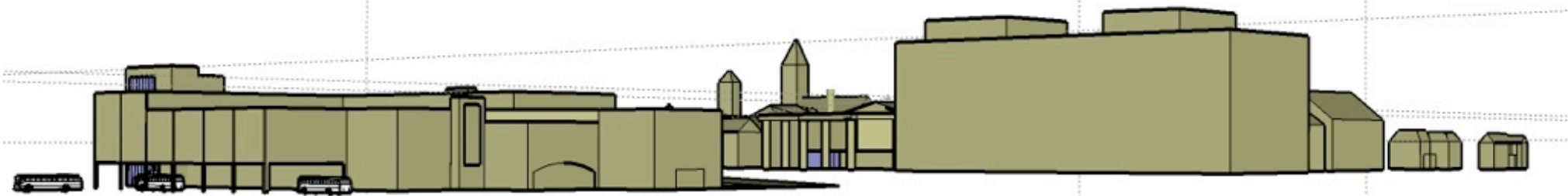
From Washington Street to North, Across Bridge Street

Eye Level



From Washington Street to North, Across Bridge Street

Eye Level



From North Street 114 Viaduct to Southeast (with new courthouse)

Eye Level